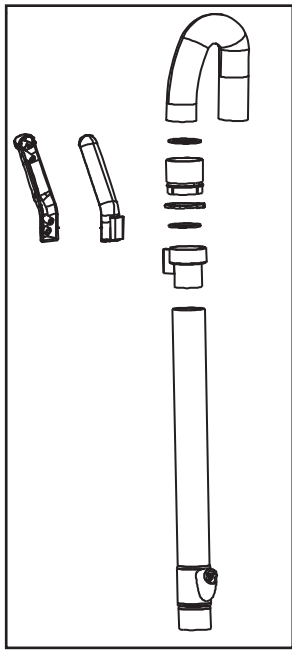
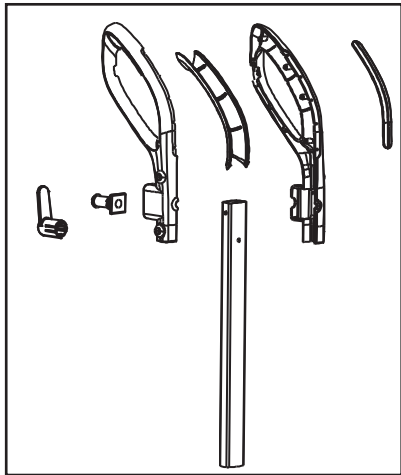




BG15

BGUPRO12T



- 1 — [Handle assembly]
- 2 — [Pin]
- 3 — [Trigger gun]
- 4 — [Cap]
- 5 — [Warning triangle]
- 6 — [Screw]
- 7 — [Trigger gun]
- 8 — [Bracket]
- 9 — [Motor housing]
- 10 — [Roller assembly]
- 11 — [Battery pack]
- 12 — [Main body]
- 13 — [Internal frame]
- 14 — [Screw]
- 15 — [Cap]
- 16 — [Plate]
- 17 — [Motor housing]
- 18 — [Bracket]
- 19 — [Motor housing]
- 20 — [Roller]
- 21 — [Roller]
- 22 — [Roller]
- 23 — [Motor housing]
- 24 — [Screw]
- 25 — [Roller]
- 26 — [Motor housing]
- 27 — [Roller]
- 28 — [Roller]

Bissell Business Ventures, Inc.

Issued: October 2011
 Revised:
 © 2011 BISSELL Homecare, Inc.

BISSELL Big Green Commercial BG15

Model BGUPRO12T Hard Body Standard Upright



KEY	PART NO	DESCRIPTION
1	2037781	Handle Assembly
2	2037783	Thumb Screw
3	2037811	Reception Inlet 3P
4	2037821	PowerSwitch (Green)
5	2037784	Cable Restrain Assembly
6	2037817	Crevice Tool
7	2037816	Upholstery Tool
8	2037785	Height Adjuster Handle (Yellow)
9	2037797	Wand Assembly (Black)
10	2037787	Back Handle w/ Grips
11	2037799	Filter Cassette Body (Black)
12	2037798	Front Door Assembly (Green)
13	2037788	Rear Body Single Motor
14	2037820	Locking Pedal
15	2037790	Height Adjustment Knob (Black)
16	2037813	Felt Air Outlet Cotton
17	2037791	Brush Cover Assembly (Green)
18	2037803	Bumper for Brush Unit (Grey)
19	2037789	Swivel Base Assembly
20	2037792	Motor Unit UPSM Assembly
21	2037793	Motor Cover Right
22	2037795	Rear Castor w/ Bearing and Shaft
23	2037794	Brush housing Assembly w/ Grey Bumper
24	2037814	Belt
25	2037815	Brush Roller Assembly with End Caps
26	2037804	Brush Housing Bottom Cover Assembly (Black)
27	2037801	Air Intake Right Support
28	2037800	Air Intake and Swivel UPSM Assembly
XX	2037782	Cable Cord USA (Yellow)
XX	2037786	Spring Plate for Height Adjuster
XX	2037805	Main PCB Board
XX	2037806	Motor SM 1000W
XX	2037807	Motor Gear 14X
XX	2037808	Clutch Gear 60X
XX	2037812	Paper Bag (10 pack)
XX	2037818	Belt Clutch and Motor Gear
XX	2037796	Felt Air Outlet Cotton (20 pcs)
XX	2037802	Wire Fixation Bracket
XX	2037819	Foot Assembly

BISSELL Business Ventures, Inc.	Issued: September 2011 Revised: © 2011 BISSELL Homecare Inc.
---------------------------------	--------------------------------------------------------------------