



## ***Minuteman RoboScrub 20***

*Working safely alongside employees so they can focus on high-value tasks.*

*Autonomous cleaning made easy*



### Sensors keep an eye on everything

3D and 2D cameras as well as sophisticated sensors provide machine vision, learning of new routes and safe circumnavigating of obstacles.



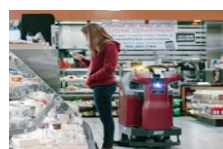
## Autonomous cleaning – with reliable results!

RoboScrub 20, the autonomous cleaning machine of the Minuteman brand, has already proven its efficiency in the field: from production halls and warehouses with many small aisles to large shopping centers. This machine ensures intuitive operation and safely navigates around complex environments. Obstacles identified by the camera systems are translated into commands by the BrainOS® technology – for example “circumnavigate obstacle” or “machine stop”. To carry out short interim cleaning applications, RoboScrub 20 can also be used as a conventional ride-on scrubber-drier. Sophisticated safety concept The flashing beacon indicates an autonomously working machine. In case a critical situation occurs despite the integrated obstacle detection, emergency buttons next to the flashing beacon and on the operating panel allow rapid and uncomplicated stopping of the machine.



Compact and highly efficient for best cleaning results.

Technical Data	
Feature	Specification
Cleaning path	20 in/50.8 cm
Productivity per hour theoretical max manual mode	24,500 ft <sup>2</sup> / 3106 m <sup>2</sup>
Brush RPM	175
Solution tank	16 gal/60.5 L
Recovery tank including demisting chamber	16 gal/60.5 L
System voltage	24 Volts
Battery run time	up to 4 hours
Battery	230 Ah AGM
Weight empty	343 lbs/155.5 kg
Weight empty with batteries	615 lbs/279 kg
Length	55.5 in/140.9 cm
Width	26 in/66 cm
Height	47.5 in/120.6 cm
	Redundant sensors detect and avoid people and obstacles. Equipped with two auto-stop buttons. Horn. Anti joy ride detection. Blinkers alert turn direction.
Mapping	Teach and repeat and Area Fill



The sensors and cameras constantly monitor the machine's surroundings and scan it for obstacles.

In situations where RoboScrub 20 cannot circumnavigate such obstacles, the machine stops automatically.