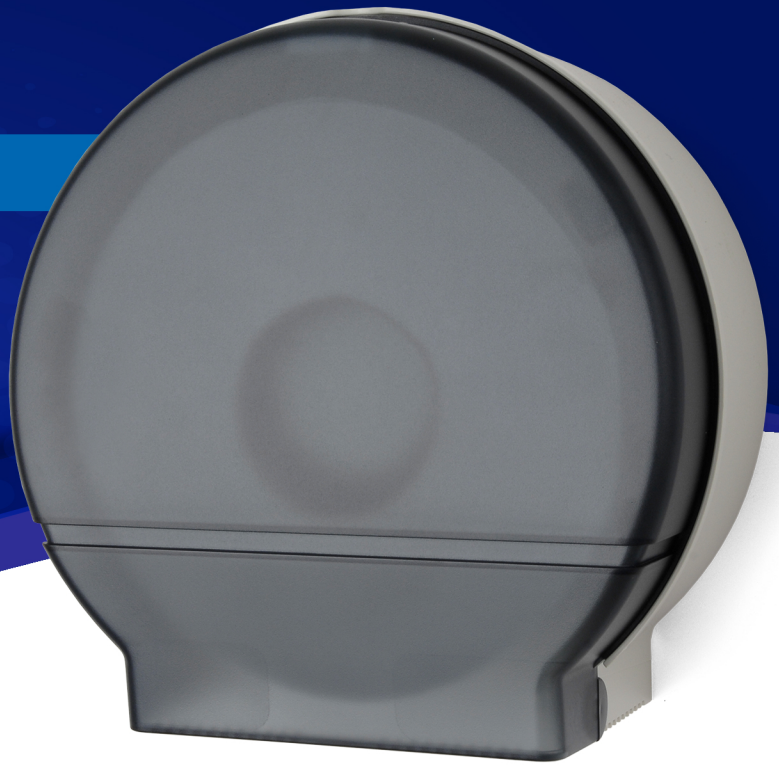


RD0026

Single 9" Jumbo Tissue Dispenser



FEATURES



- Universal for all brands of 9" diameter Jumbo Bath Tissue with minimum 3" core
- Holds all popular Jumbo Roll Tissue widths
- Dispenses perforated or non-perforated tissue, 1 or 2 ply
- Easy loading saves costly maintenance
- All plastic construction improves styling, provides easy to clean surface
- Permanent key knob available

AVAILABLE COLORS

Dark Translucent Cover
with a Beige Back



Dark Translucent Cover
with a Black Back



White Translucent Cover
with a Beige Back



SPECIFICATIONS

Model #	RD0026-01 (Dark Translucent)			
	RD0026-02 (Black Translucent)			
	RD0026-03 (White Translucent)			
	RD0026-01F (Dark Translucent)			
	RD0026-02F (Black Translucent)			
	RD0026-03F (White Translucent)			
Dimensions	11.47" W x 11.22" H x 5.37" D			
Weight	1.65 lbs	Case Pack	6 per case - 3.09' ³	
Capacity	9" Roll (3 $\frac{3}{8}$ " Core) or 9" Roll (2 $\frac{1}{4}$ "-3 $\frac{3}{8}$ " Core)		Key Type	1

